

BATH #2

BATH #1

DINING ROOM
13'- 2" x 13'- 11"

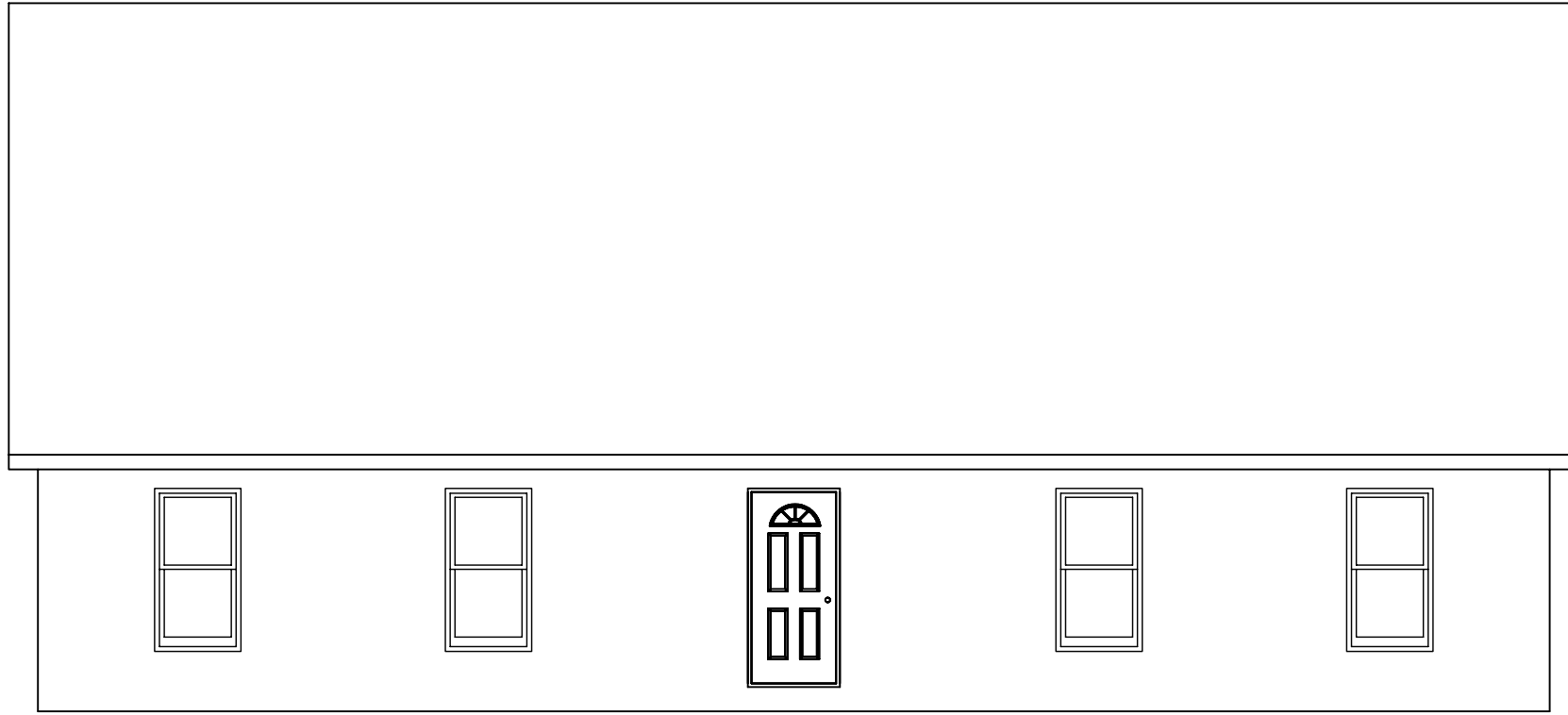
KITCHEN
12'- 0" x 13'- 11"

BEDROOM #1
20'- 0" x 13'- 11"

FOYER
OPEN TO ABOVE

LIVING ROOM
20'- 0" x 13'- 11"

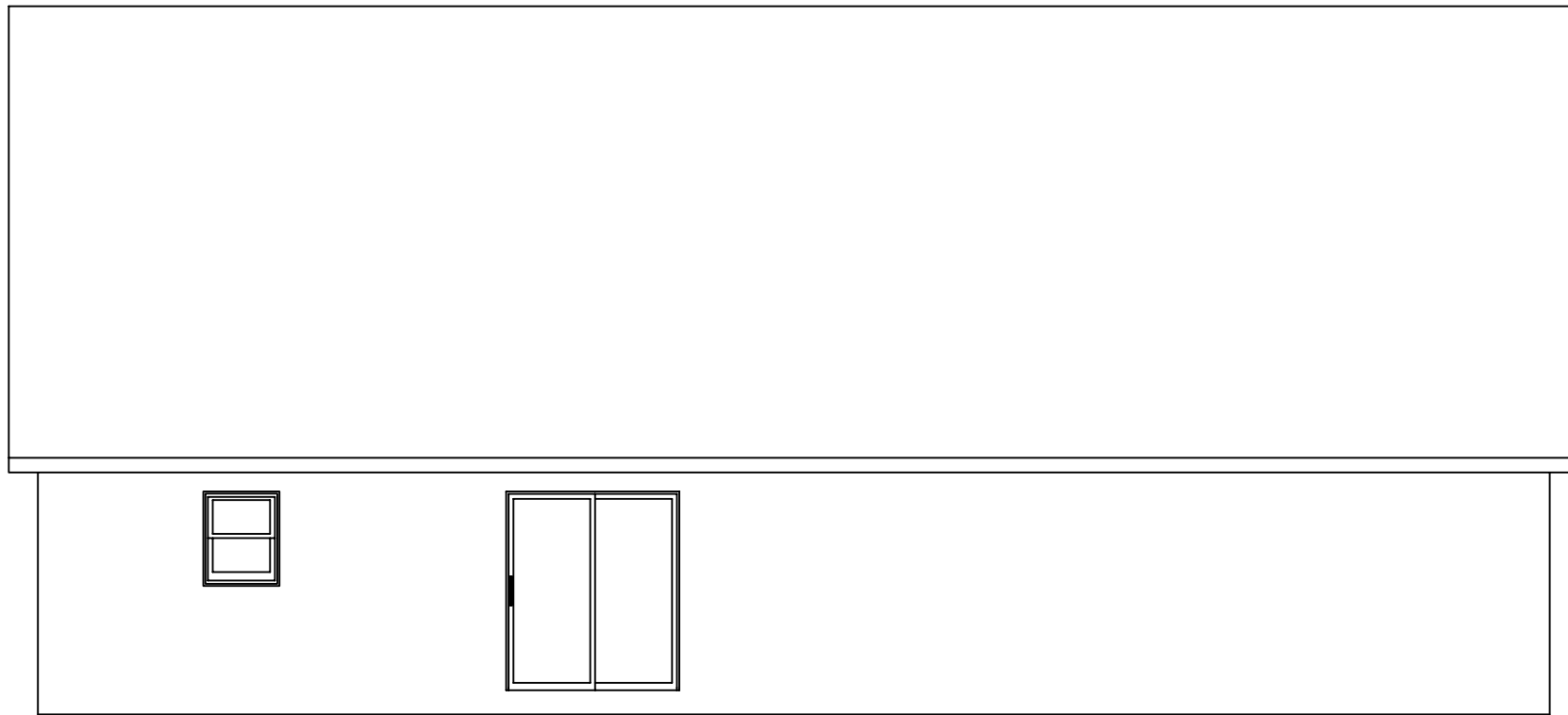
BROOKFIELD
29'- 6" x 52'- 0"



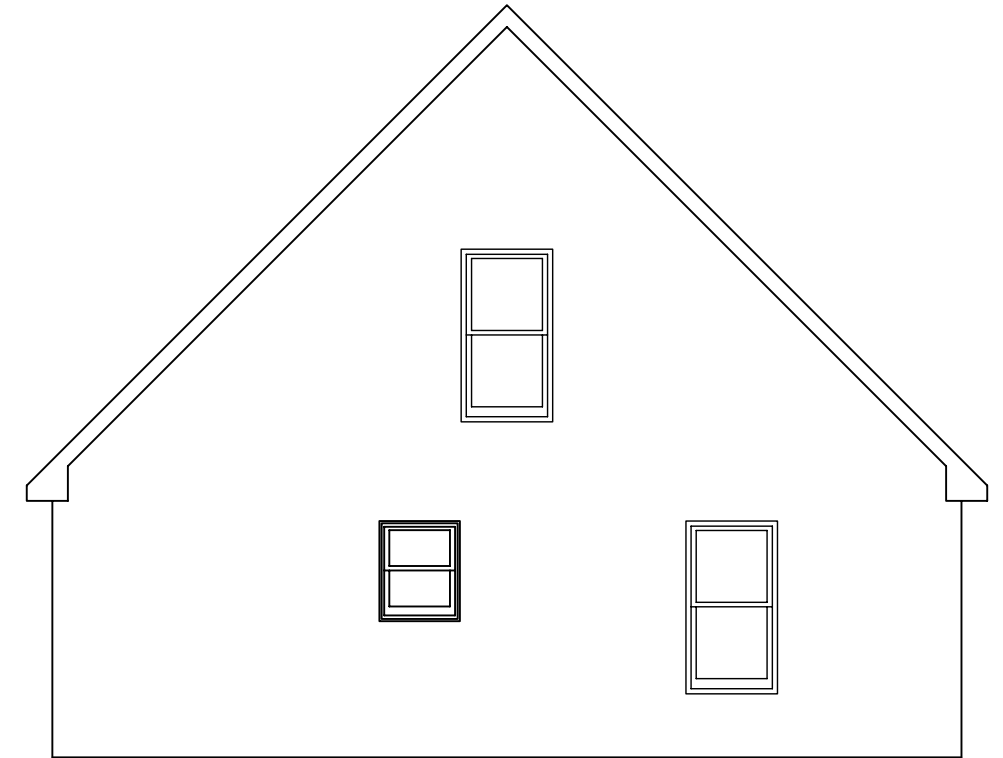
FRONT ELEVATION



RIGHT SIDE ELEVATION



REAR ELEVATION



LEFT SIDE ELEVATION