

BEDROOM #1
15'-5" X 12'-11"

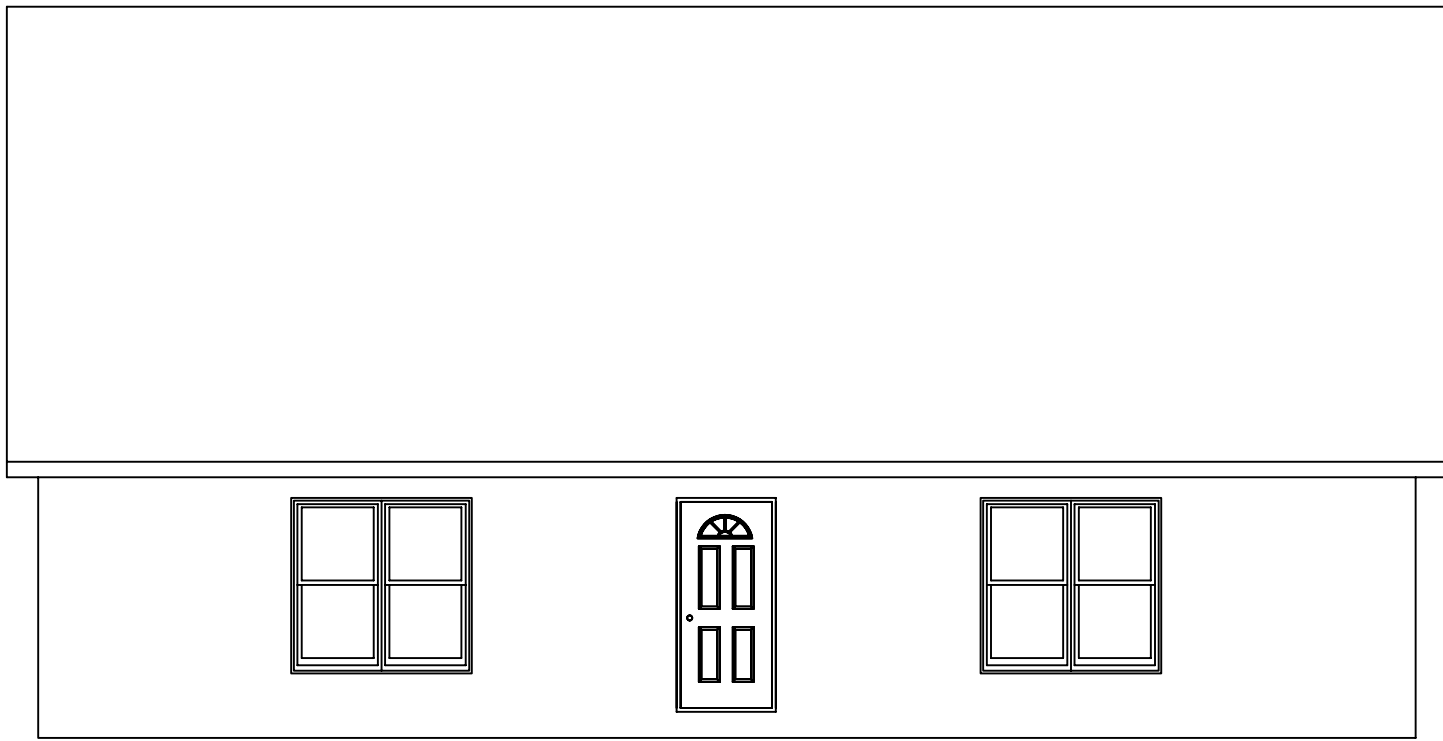
BATH #1

BEDROOM #2
13'-10" X 12'-11"

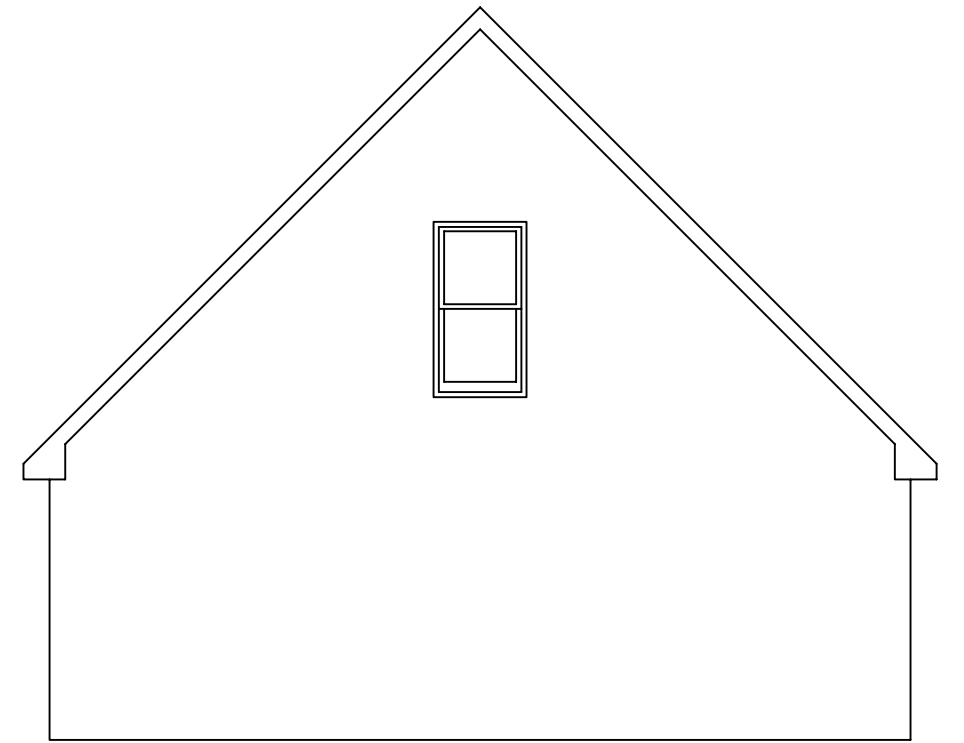
**KITCHEN/
DINING ROOM**
17'-11" X 12'-11"

LIVING ROOM
17'-8" X 12'-11"

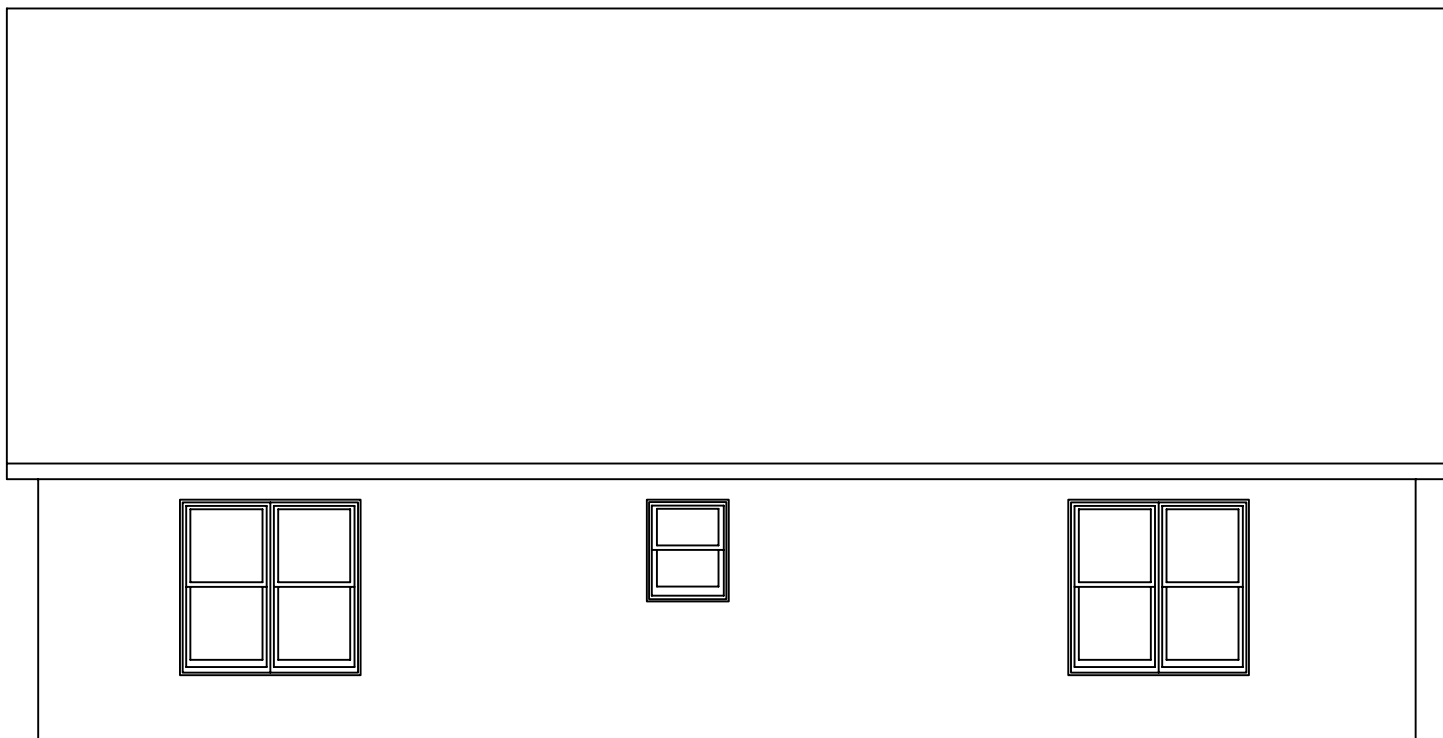
SALISBURY
27'-6" X 44'-0"



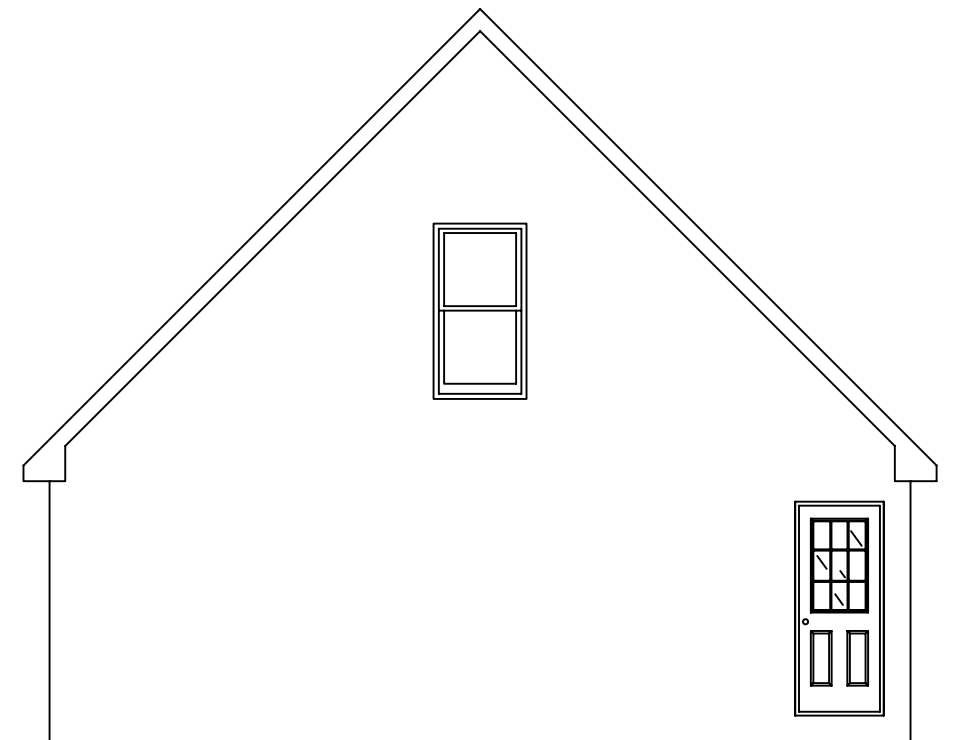
FRONT ELEVATION



RIGHT SIDE ELEVATION



REAR ELEVATION



LEFT SIDE ELEVATION