

BEDROOM #1
10'-6" X 11'-1"

BATH #2

KITCHEN / DINING ROOM
12'-11" X 18'-7"

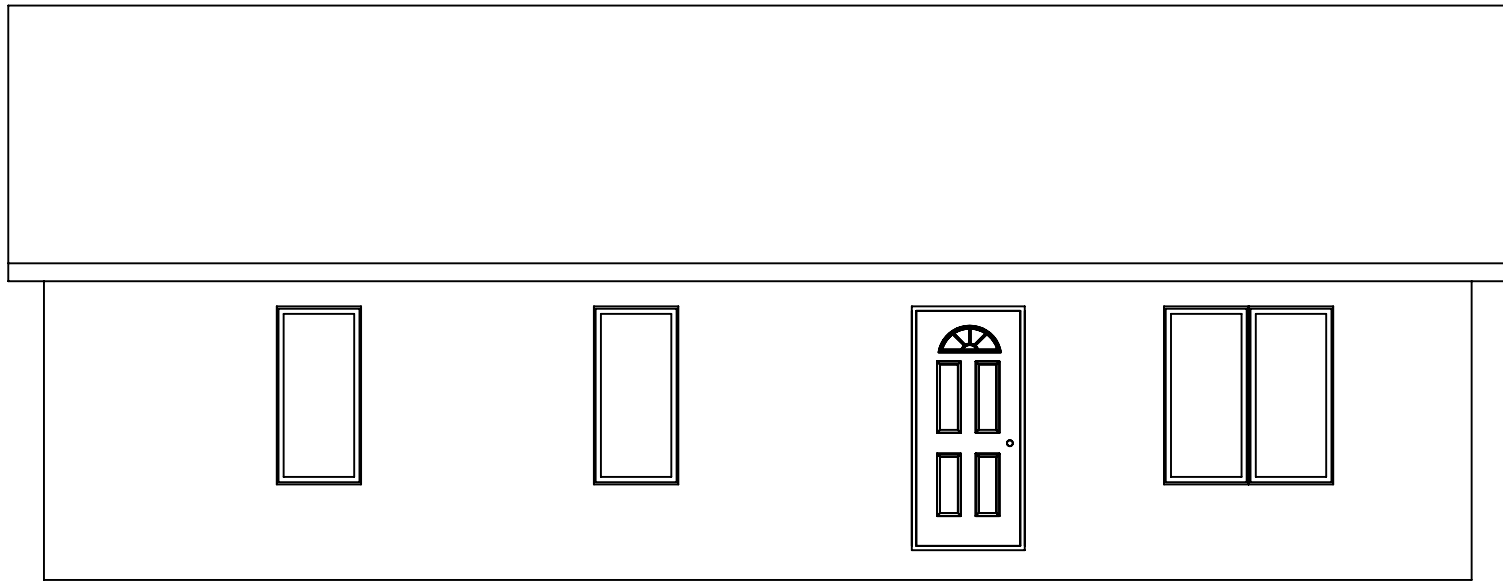
BATH #1

BEDROOM #2
9'-6" X 10'-6"

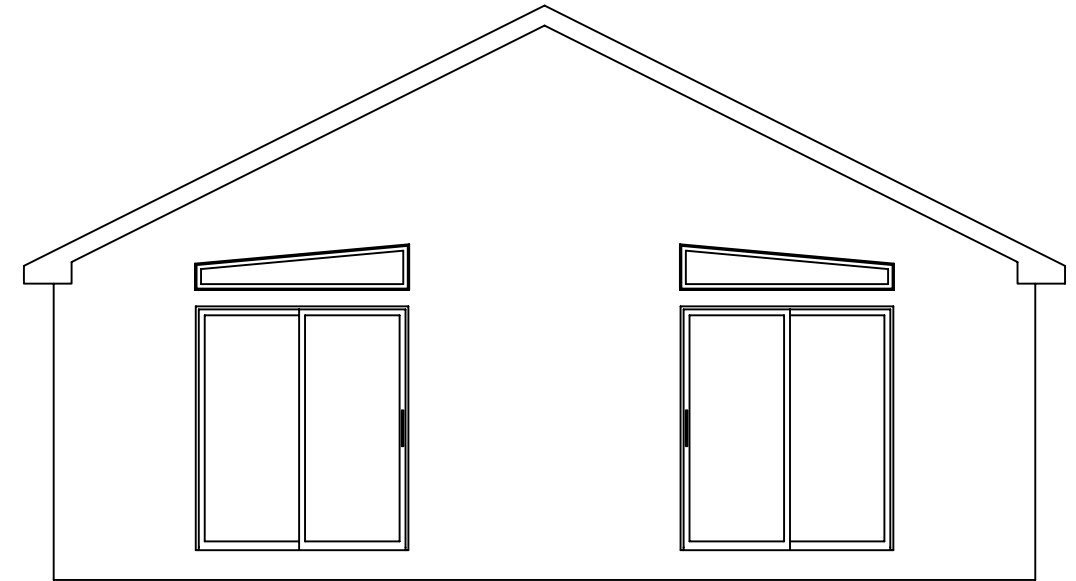
BEDROOM #3
9'-6" X 9'-8"

LIVING ROOM
12'-11" X 15'-8"

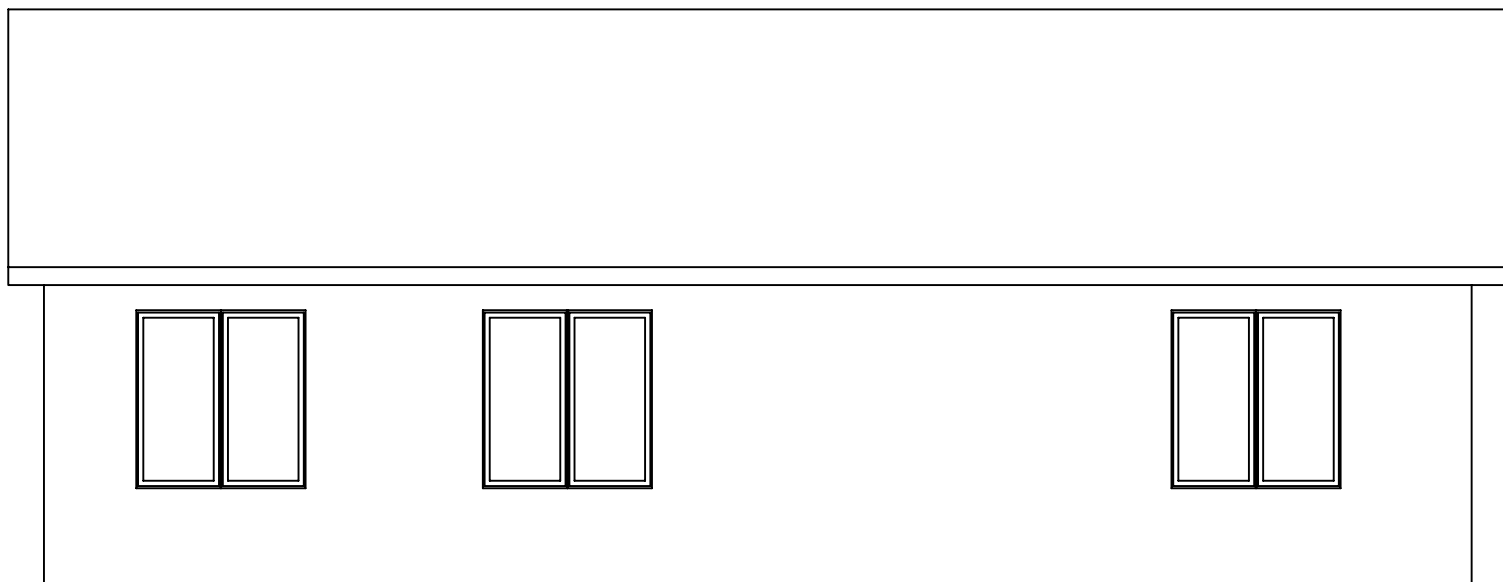
REDWOOD
27'-6" X 40'-0"



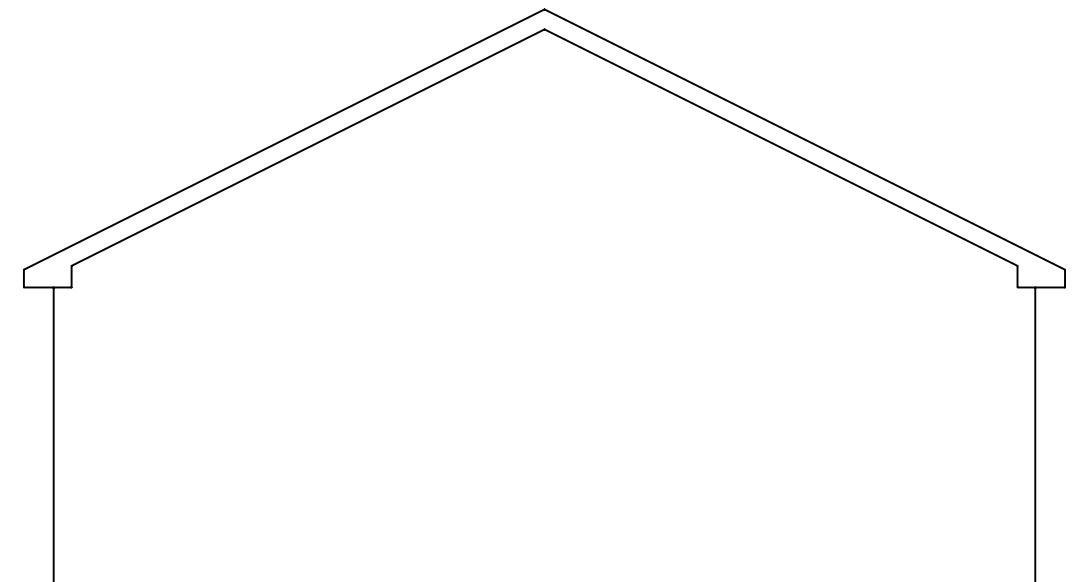
FRONT ELEVATION



RIGHT SIDE ELEVATION



REAR ELEVATION



LEFT SIDE ELEVATION