

BATH
#1

DINING ROOM
13'-5" X 12'-11"

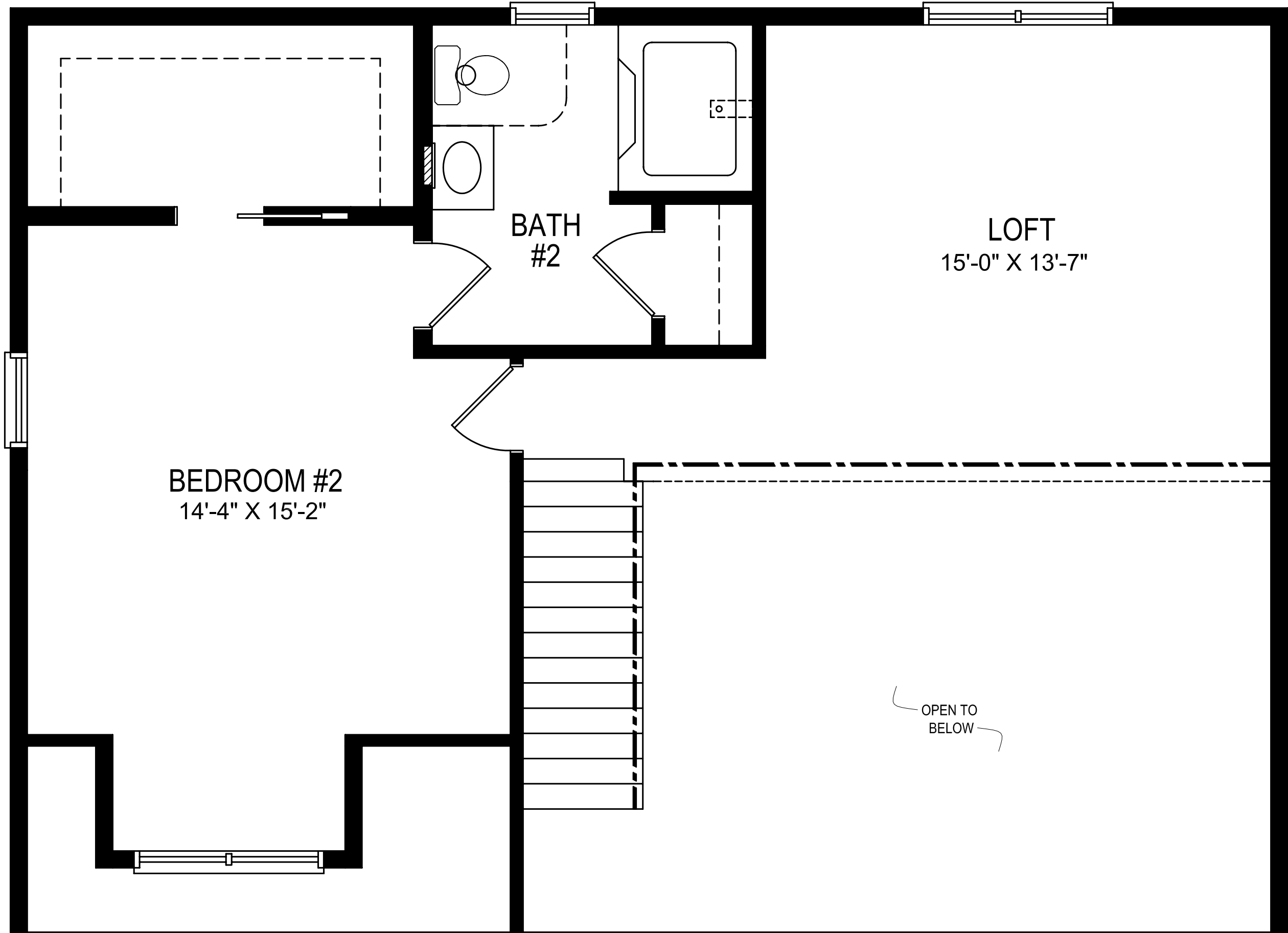
KITCHEN
13'-4" X 13'-7"

BEDROOM #1
11'-6" X 12'-11"

LIVING ROOM
22'-3" X 12'-11"

OPEN TO
ABOVE

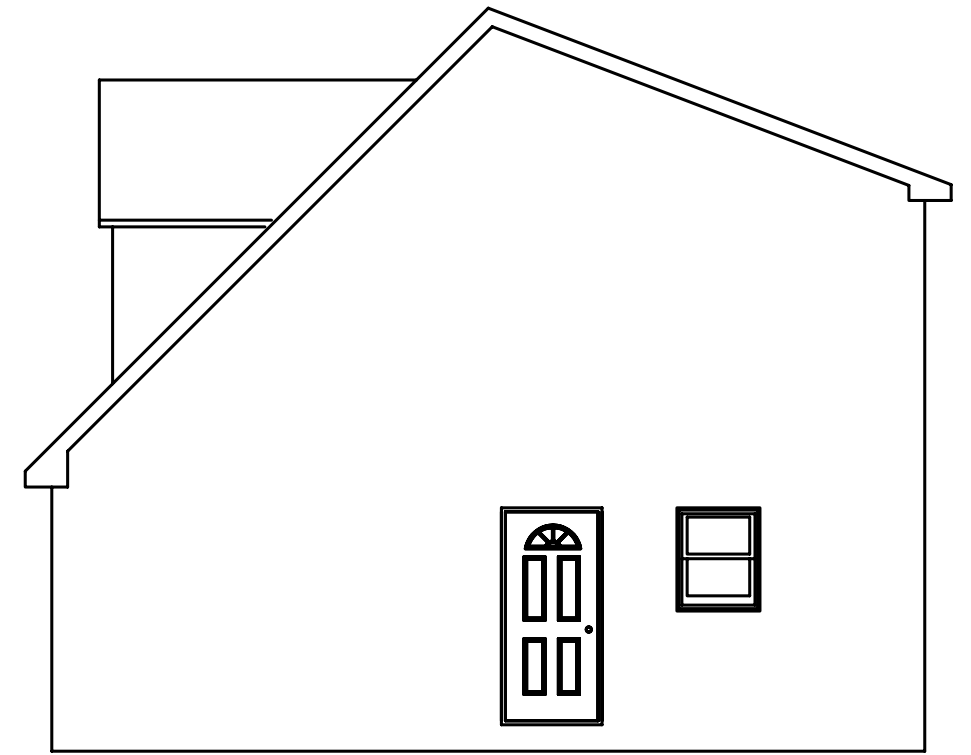
Snyder
27' 6" X 38'



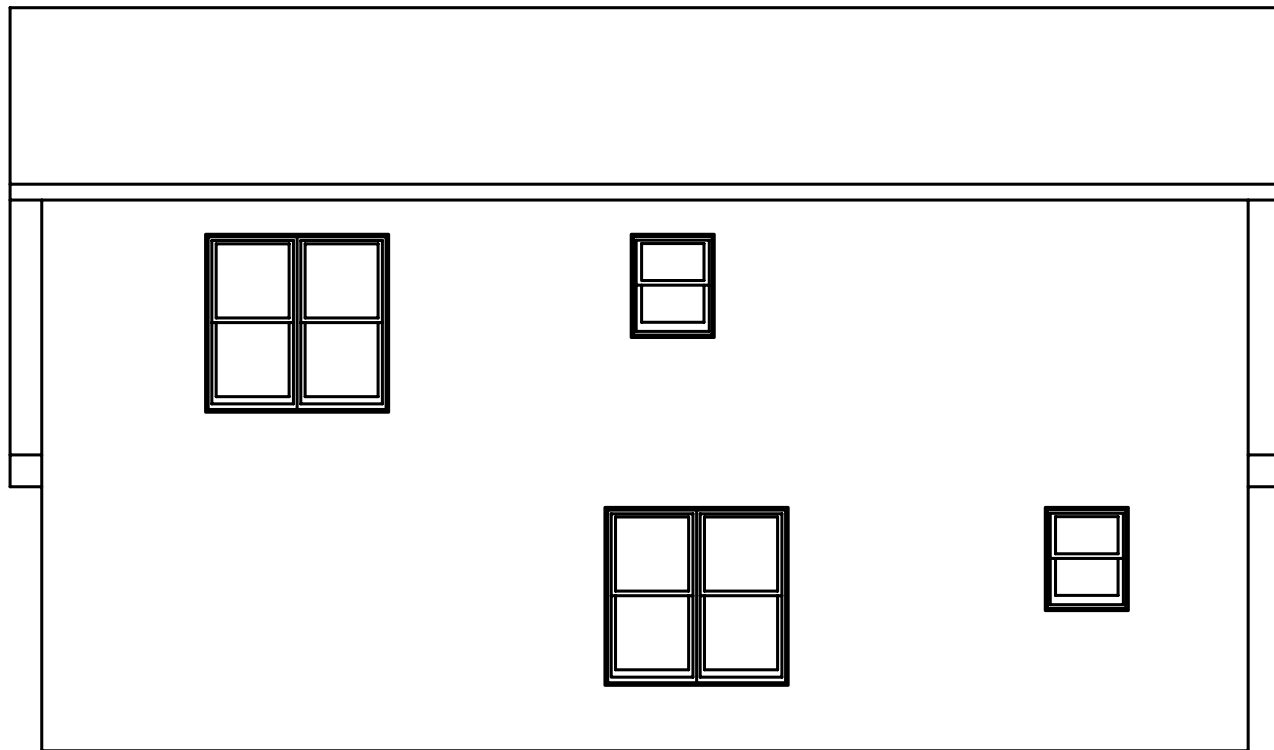
Snyder
27' 6" X 38'



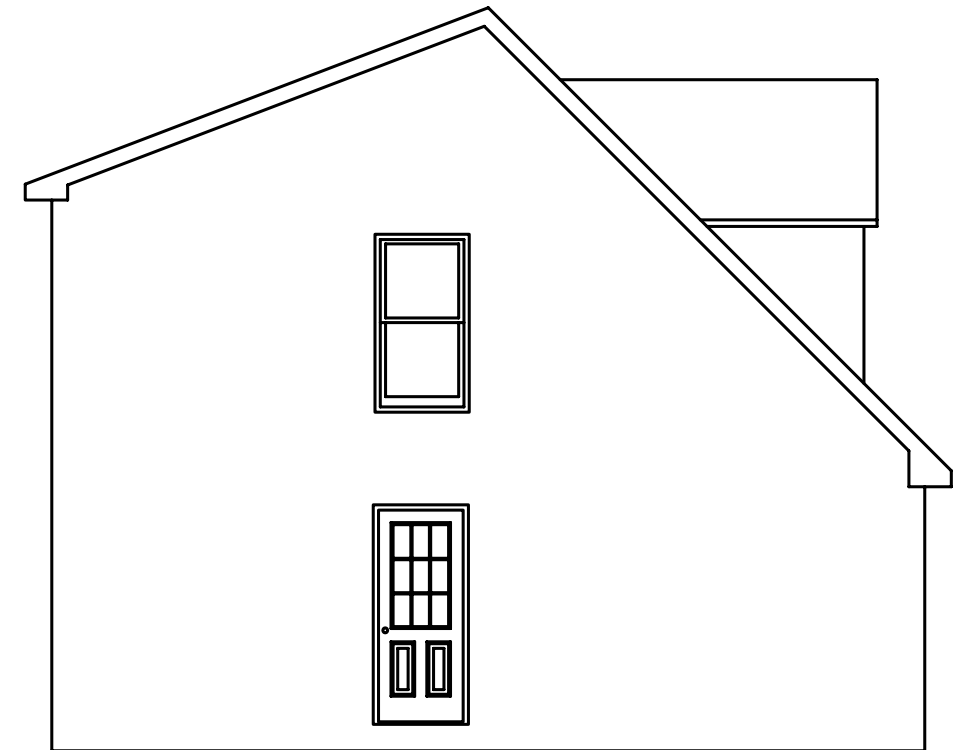
FRONT ELEVATION



RIGHT SIDE ELEVATION



REAR ELEVATION



LEFT SIDE ELEVATION