

BEDROOM  
#1  
12'4" x 13'0"

BATH  
#2

BATH  
#1

KITCHEN / DINING ROOM  
19'2" x 13'0"

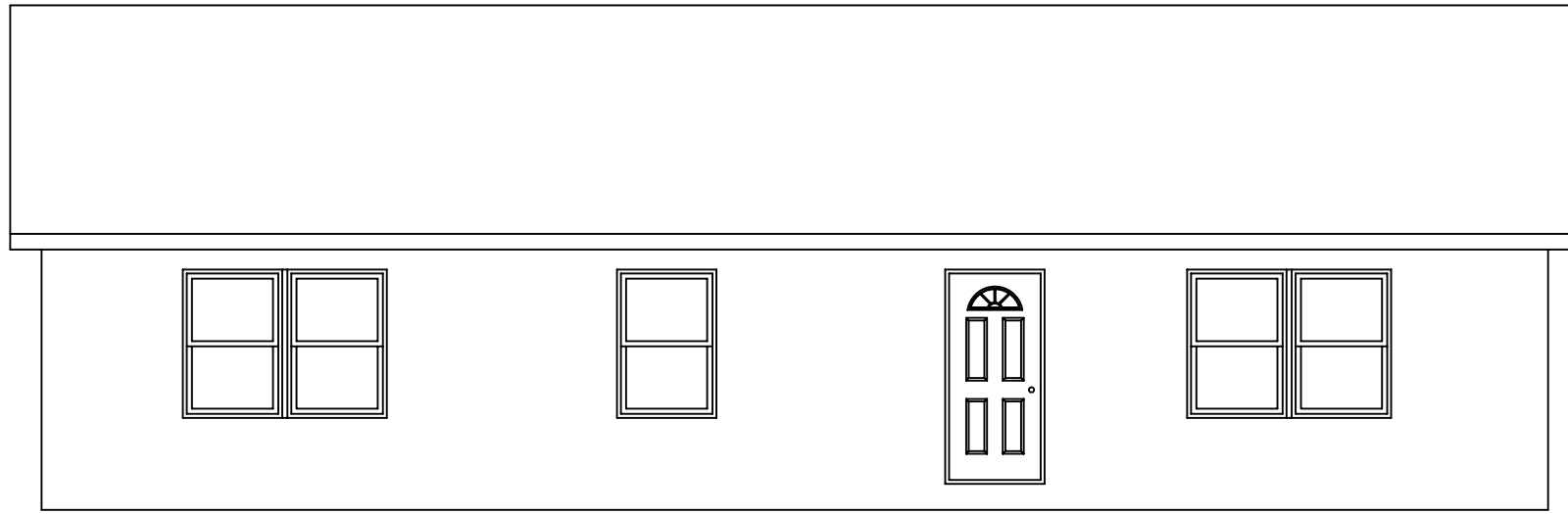
UTILITY

BEDROOM  
#2  
12'4" x 10'8"

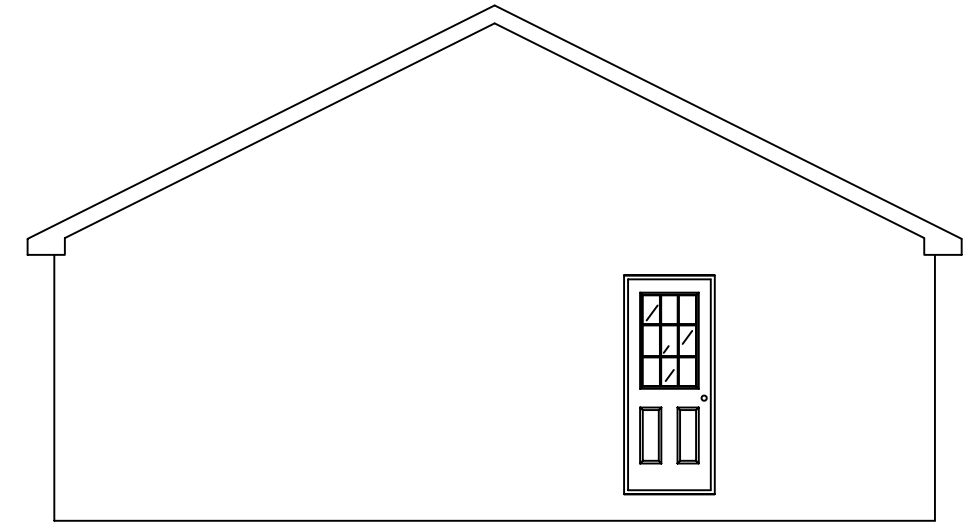
BEDROOM  
#3  
10'0" x 9'7"

LIVING ROOM  
19'2" x 13'0"

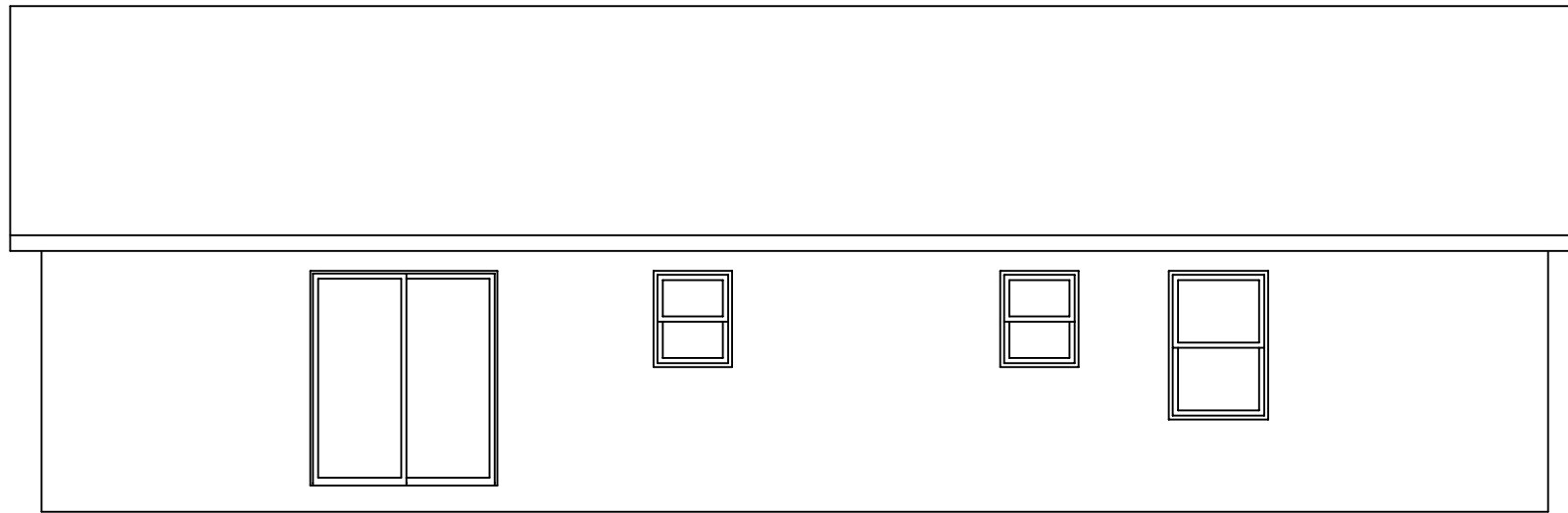
BRIDGEPORT II  
27'6" x 48'



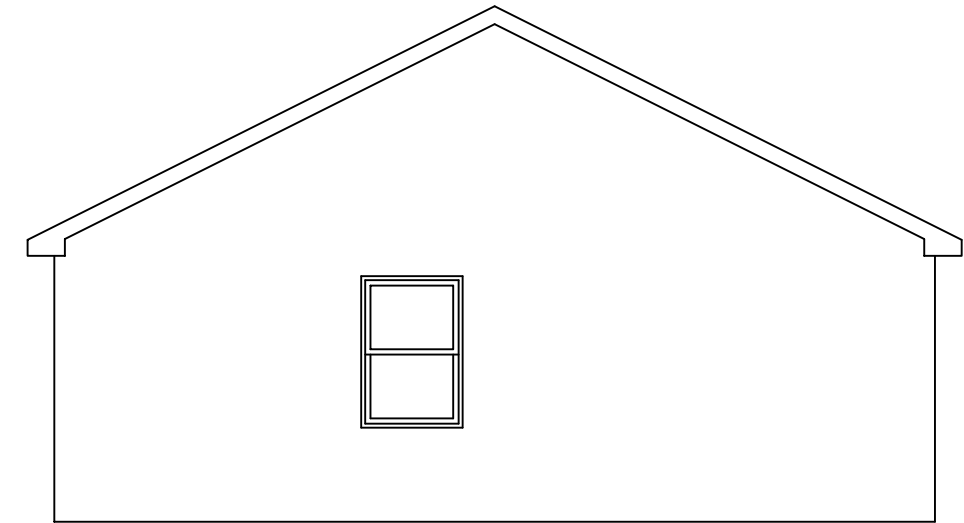
FRONT ELEVATION



RIGHT ELEVATION



REAR ELEVATION



LEFT ELEVATION