

BEDROOM #1
16'- 4" x 13'- 0"

BEDROOM #3
12'- 6" x 9'- 8"

LIVING ROOM
20'- 6" x 13'- 0"

BATH #2

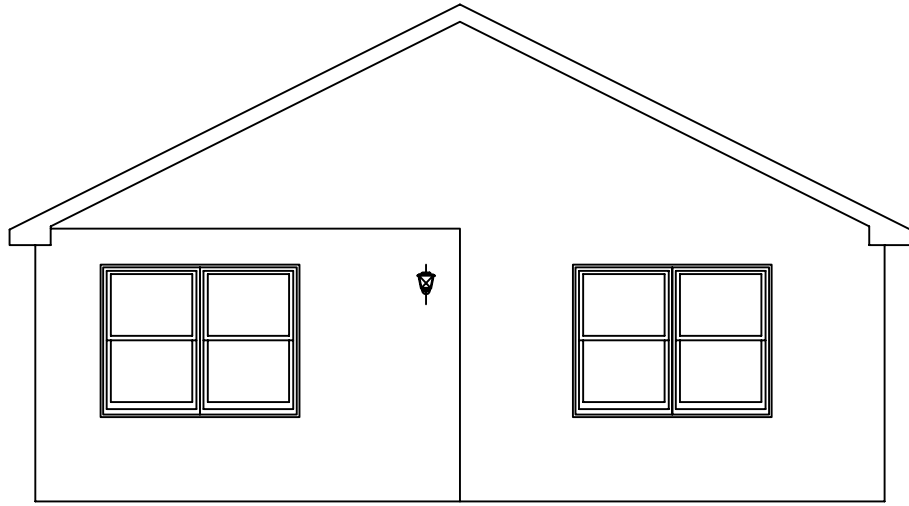
BEDROOM #2
11'- 0" x 13'- 0"

KITCHEN
11'- 6" x 13'- 0"

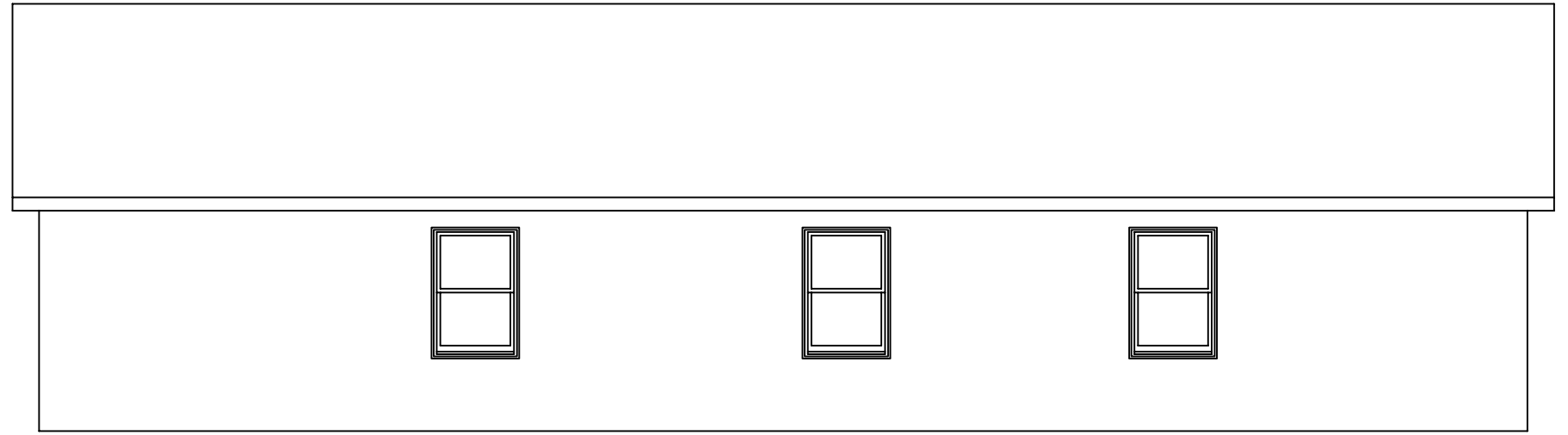
DINING ROOM
12'- 6" x 13'- 0"

BATH #1

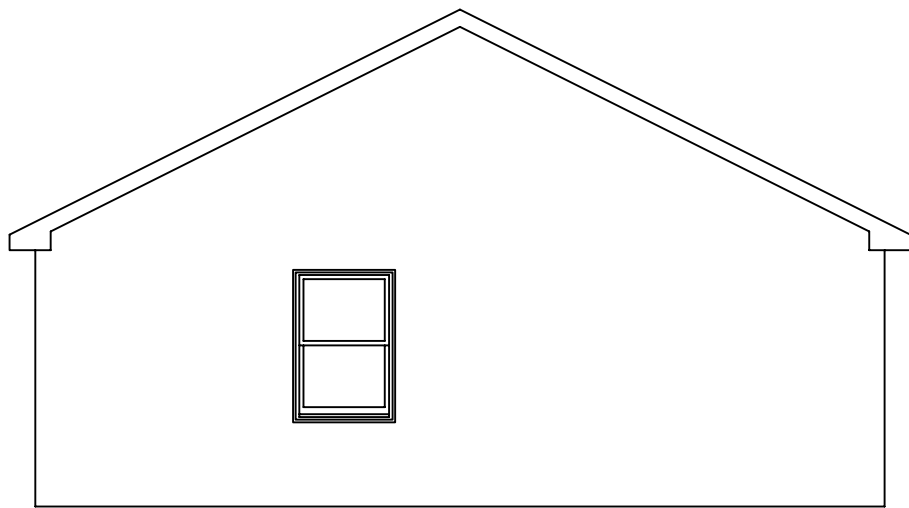
DOVER
27'- 6" x 56'- 0"



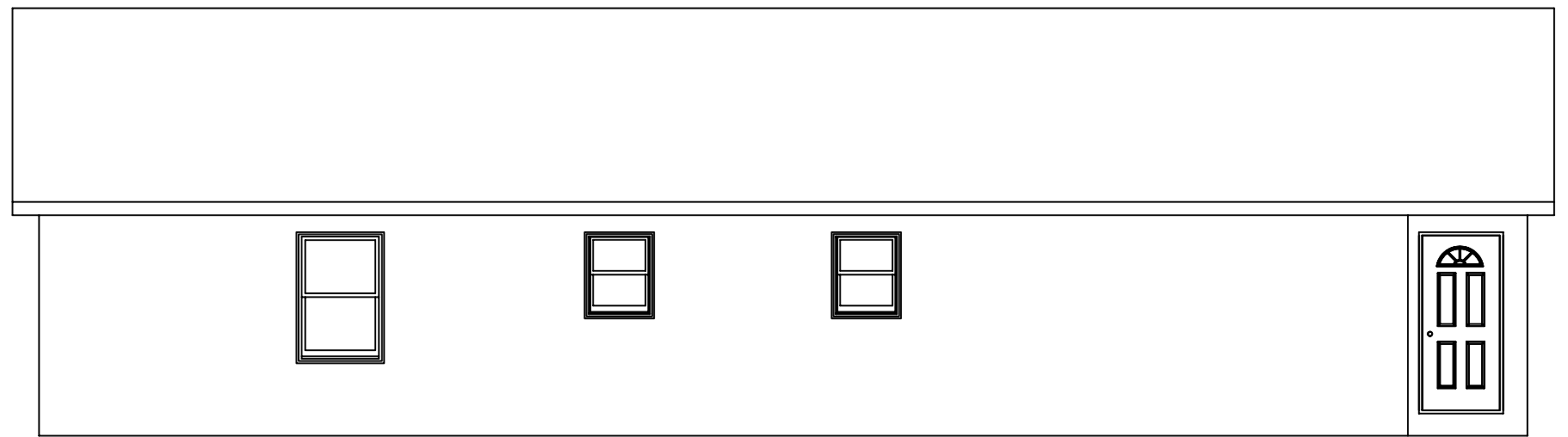
FRONT ELEVATION



RIGHT SIDE ELEVATION



REAR ELEVATION



LEFT SIDE ELEVATION