

DINING ROOM  
9'-4" X 13'-0"

KITCHEN  
10'-1" X 13'-0"

BATH #2

BATH #1

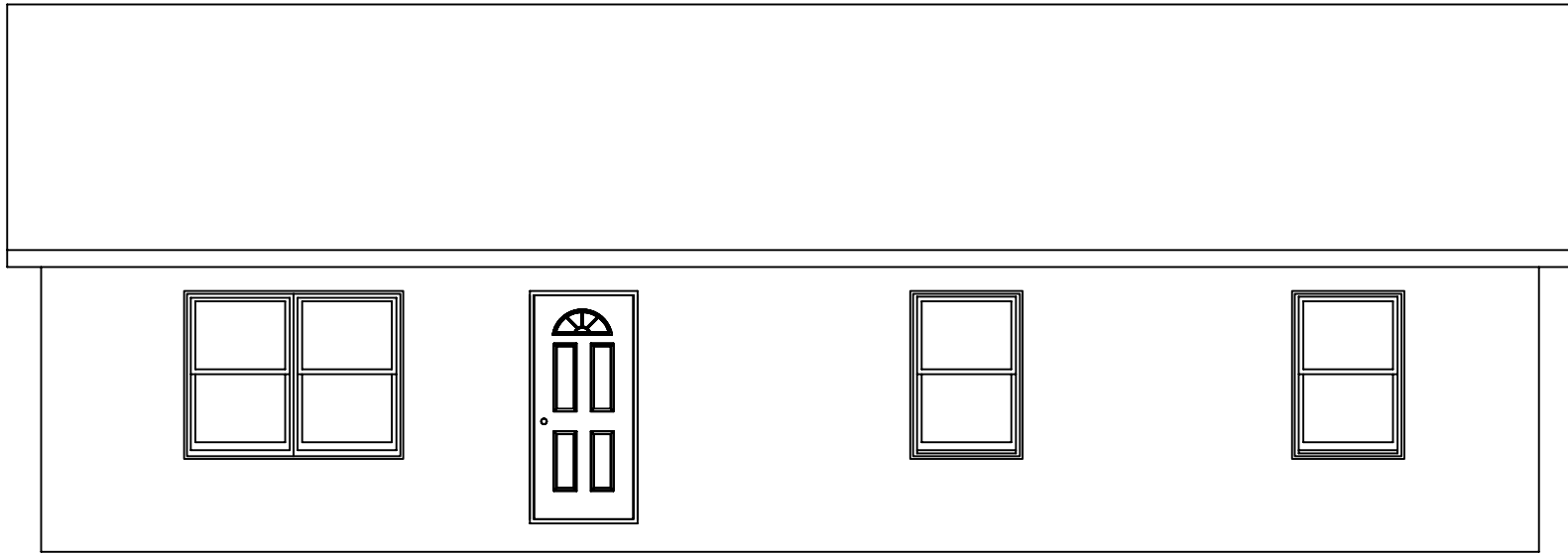
BEDROOM #1  
14'-5" X 13'-0"

LIVING ROOM  
17'-4" X 13'-0"

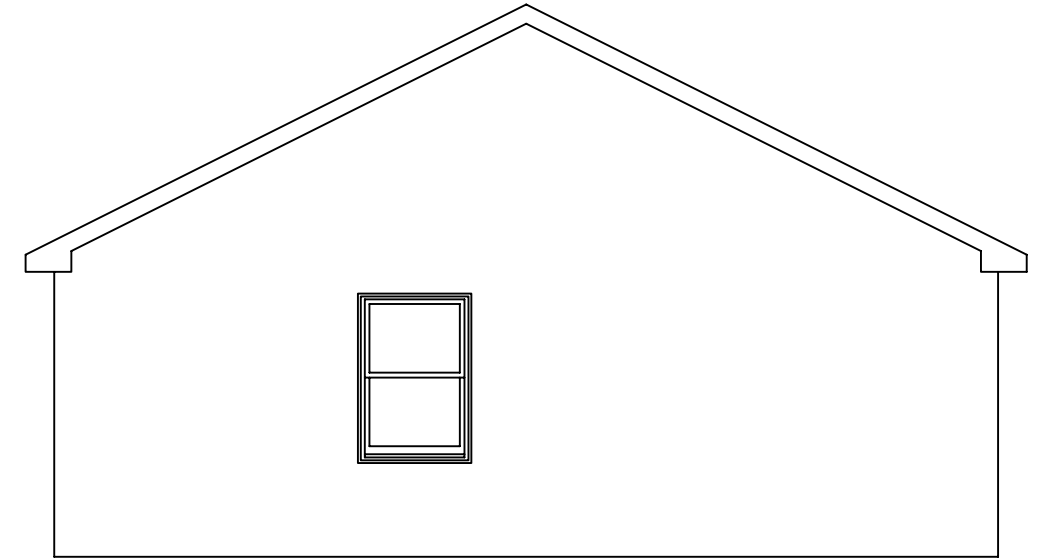
BEDROOM #3  
8'-11" X 9'-6"

BEDROOM #2  
10'-2" X 13'-0"

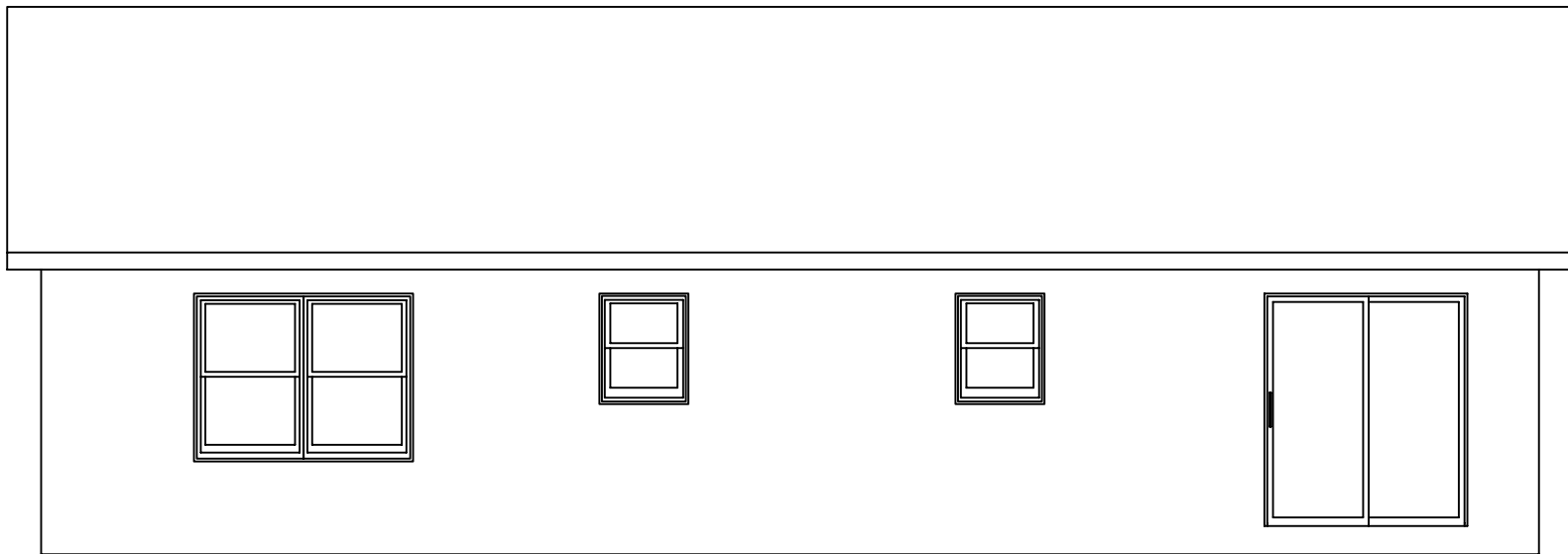
NORRISTOWN  
27'-6" X 44'-0"



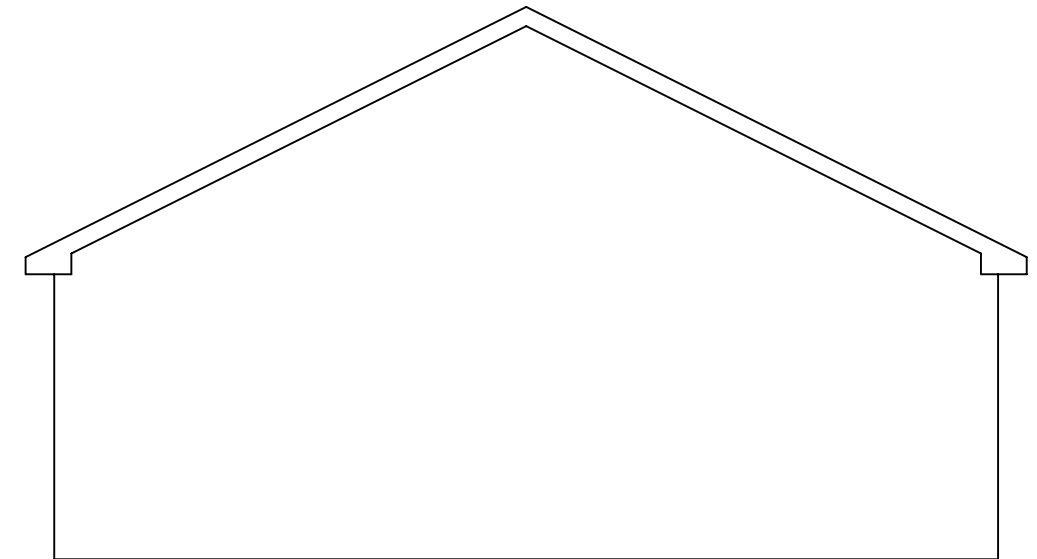
FRONT ELEVATION



RIGHT SIDE ELEVATION



REAR ELEVATION



LEFT SIDE ELEVATION