

BEDROOM #1
12'-4" X 13'-0"

BATH #2

BATH #1

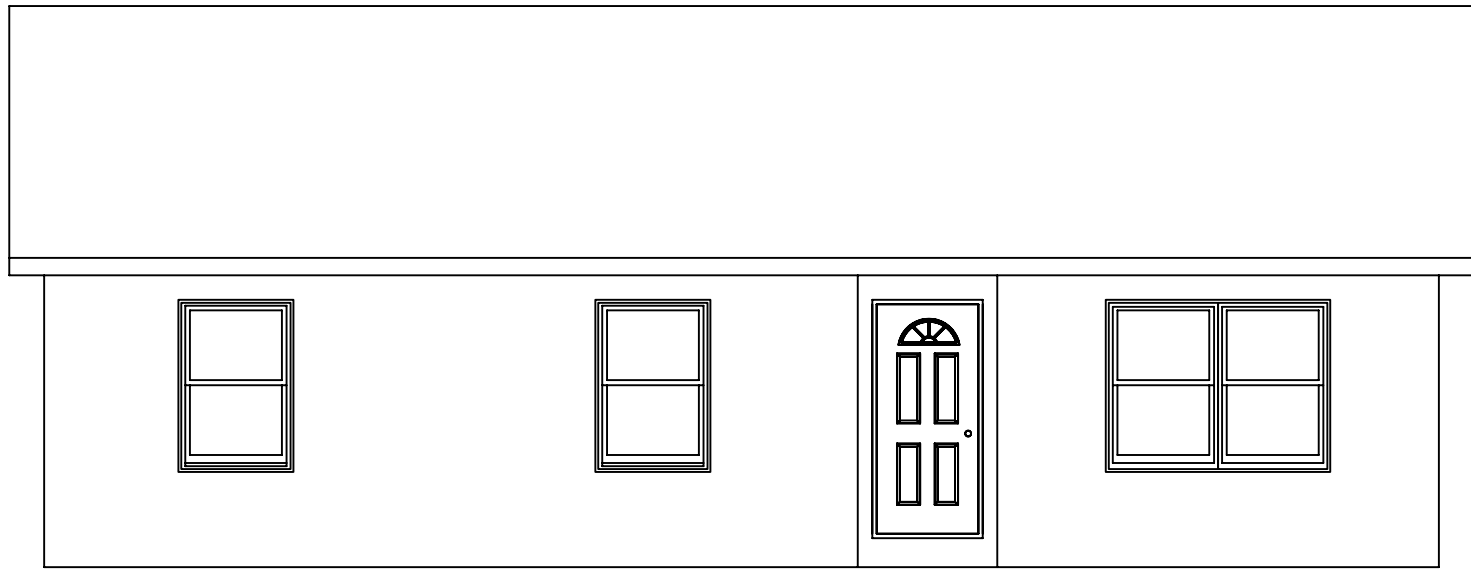
KITCHEN
14'-9" X 13'-0"

BEDROOM #2
10'-0" X 13'-0"

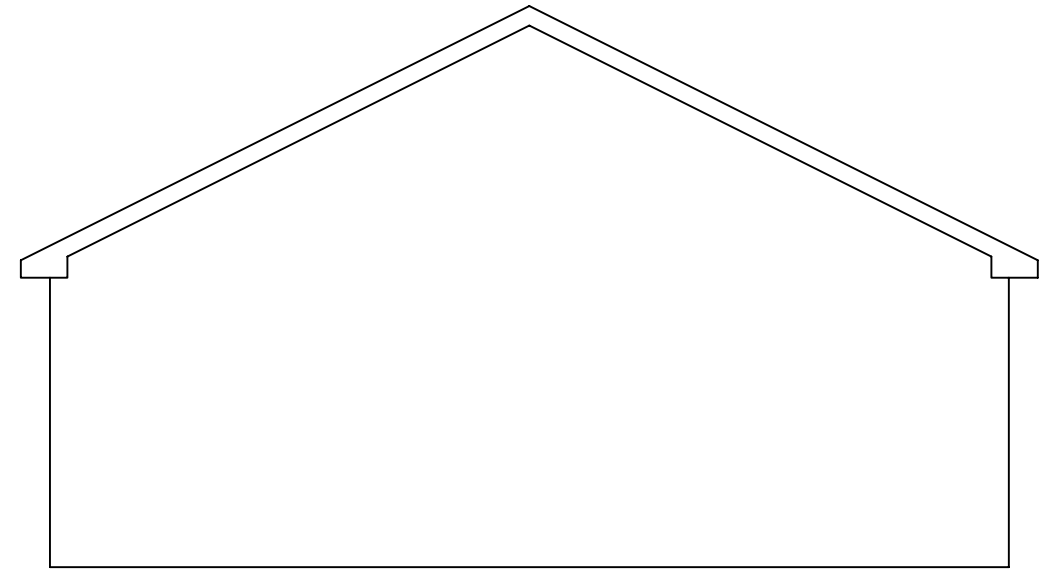
BEDROOM #3
9'-7" X 9'-7"

LIVING ROOM
16'-3" X 13'-0"

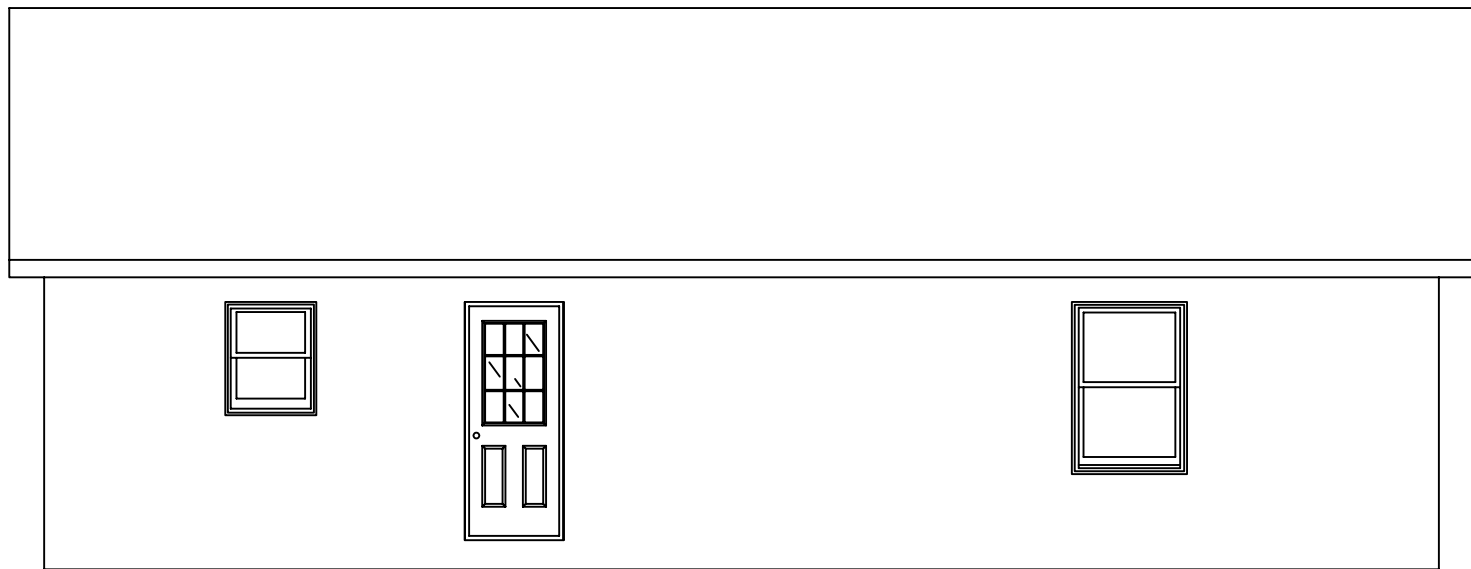
POTTSTOWN
27'-6" X 40'-0"



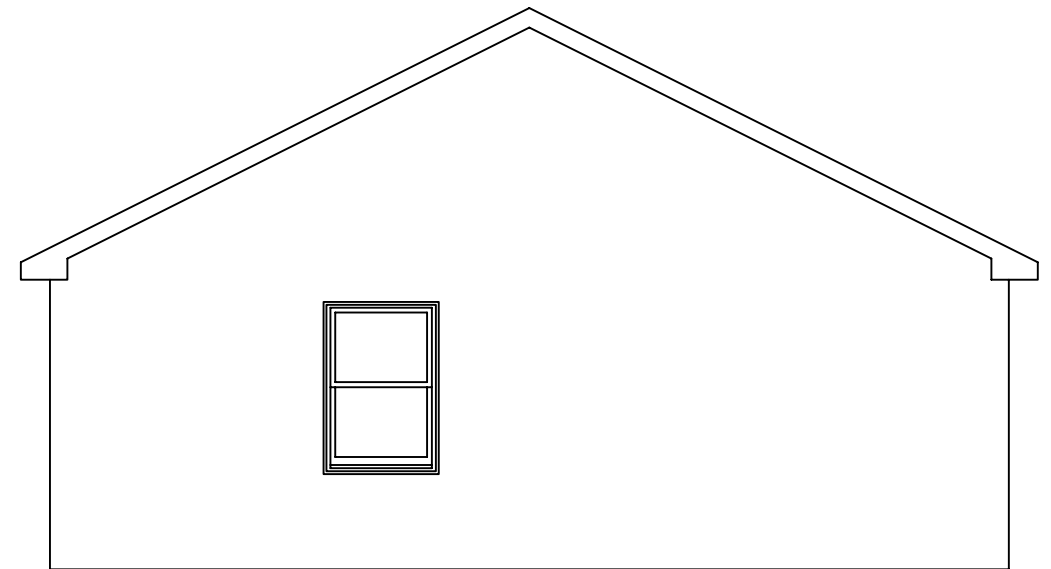
FRONT ELEVATION



RIGHT SIDE ELEVATION



REAR ELEVATION



LEFT SIDE ELEVATION