



BEDROOM #1  
13'-0" X 14'-10"

BATH #2

DINING ROOM  
13'-0" X 14'-1"

KITCHEN  
9'-7" X 11'-0"

BATH #1

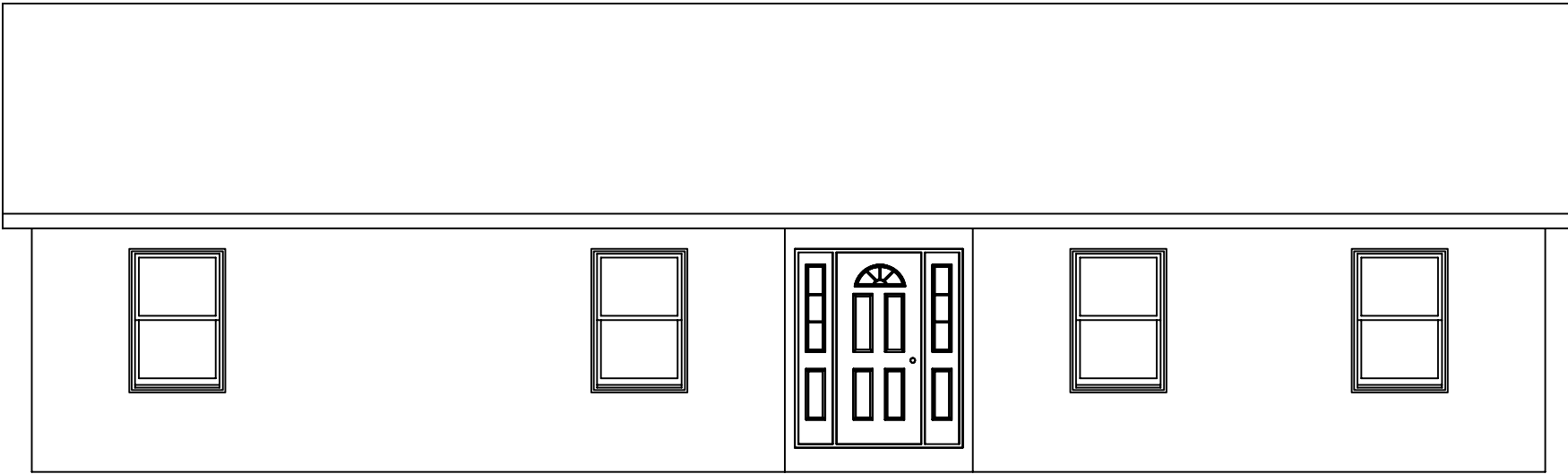
BEDROOM #2  
13'-0" X 11'-3"

BEDROOM #3  
9'-7" X 10'-10"

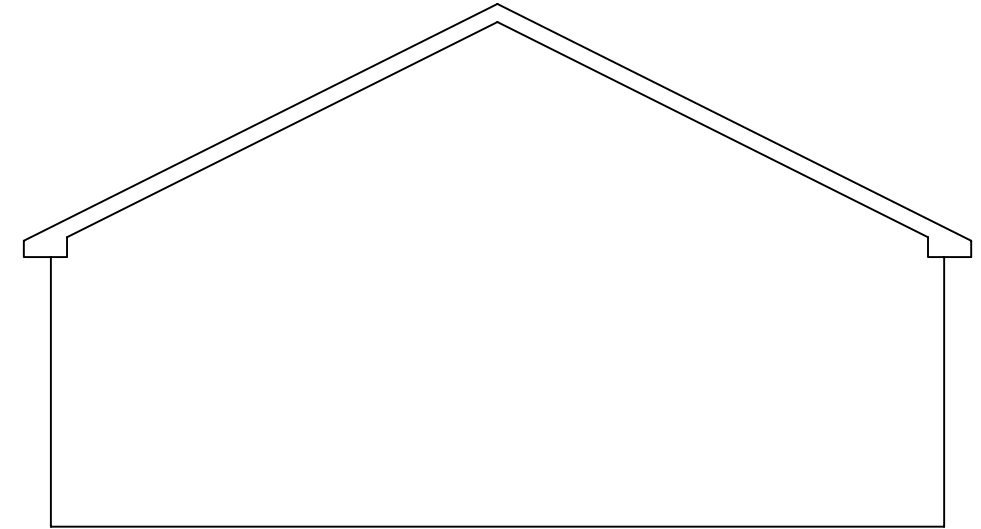
FOYER

LIVING ROOM  
13'-0" X 18'-8"

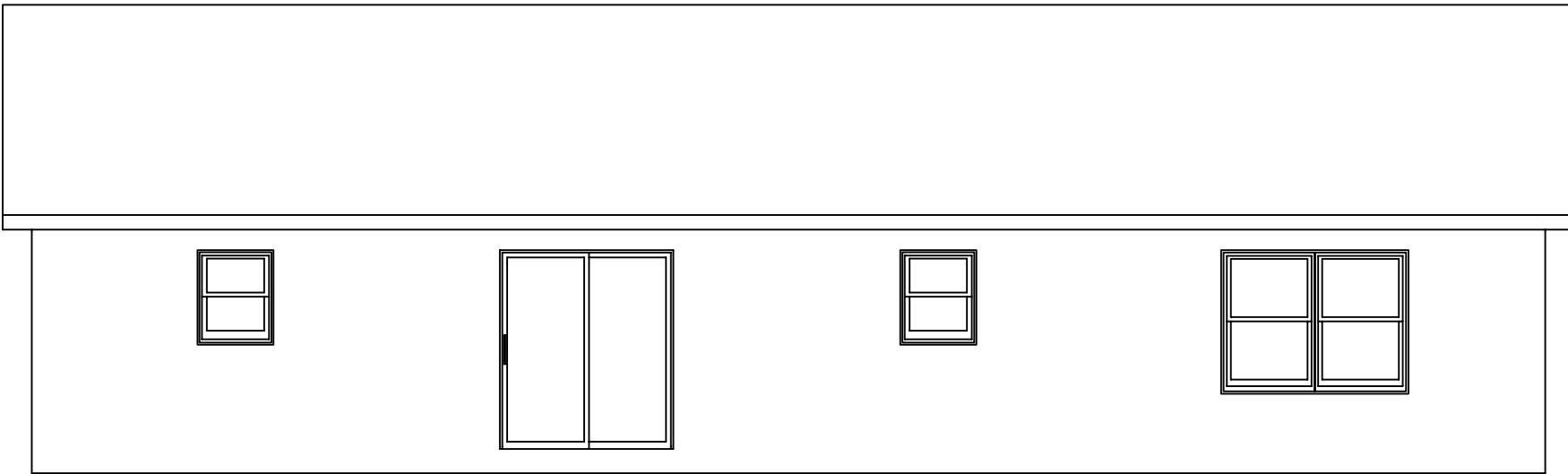
READING  
27'-6" X 52'-0"



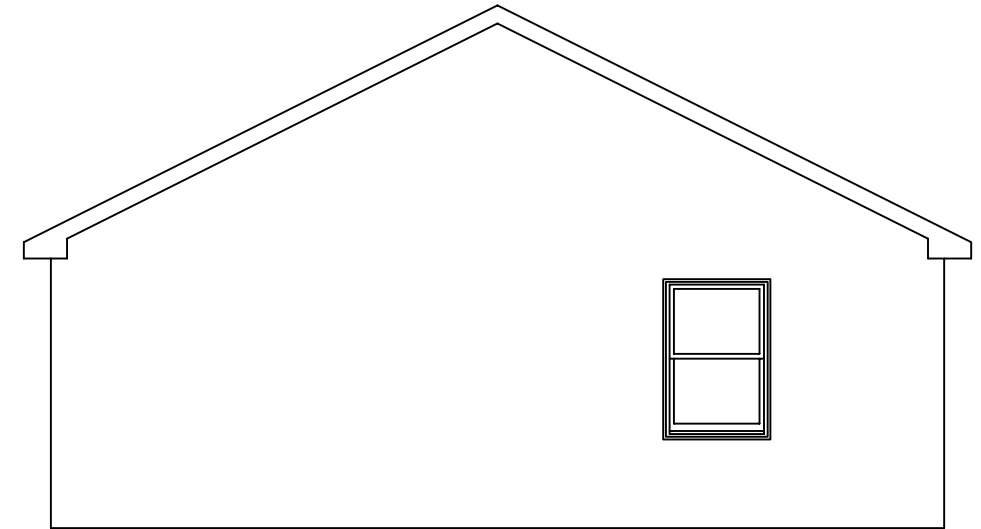
FRONT ELEVATION



RIGHT SIDE ELEVATION



REAR ELEVATION



LEFT SIDE ELEVATION