

DINING ROOM  
9'-0" X 13'-3"

KITCHEN  
10'-7" X 13'-0"

LIVING ROOM  
11'-9" X 13'-3"

BATH #2

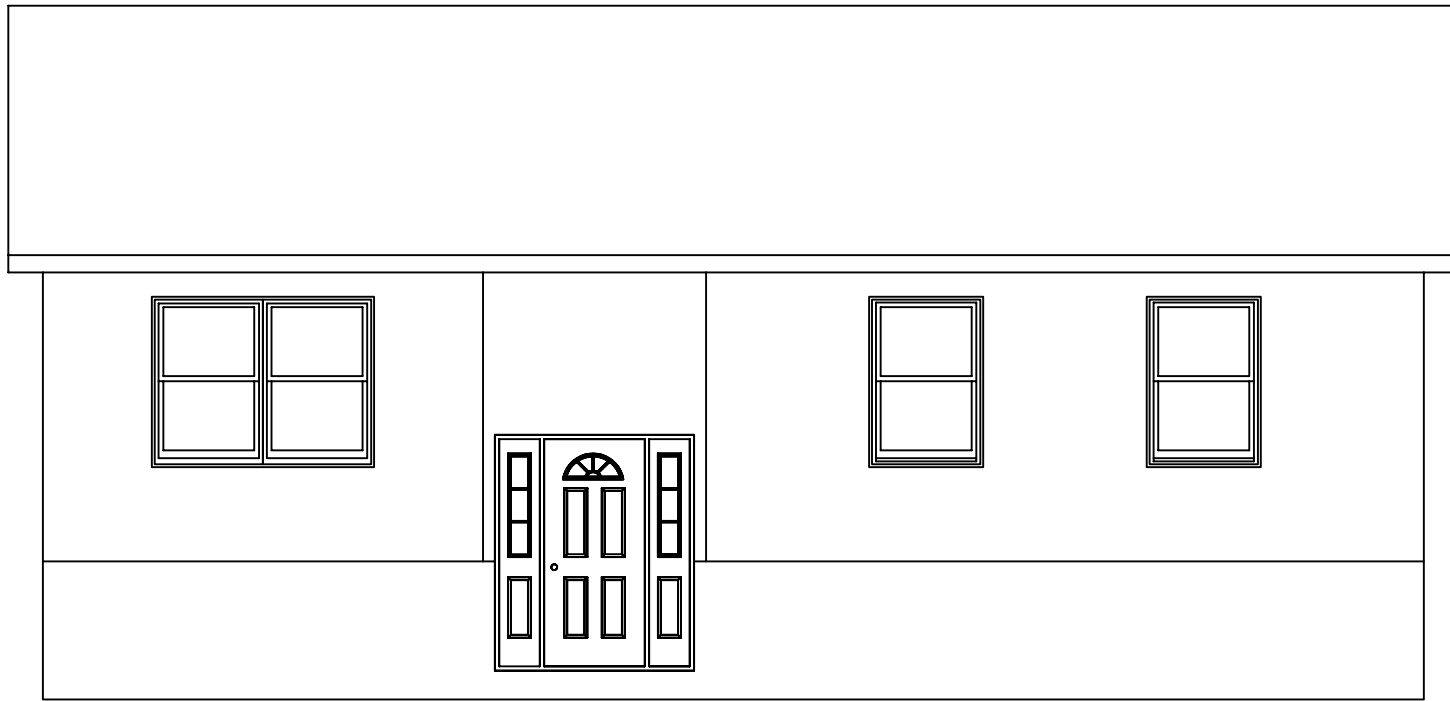
BATH #1

BEDROOM #1  
10'-10" X 13'-0"

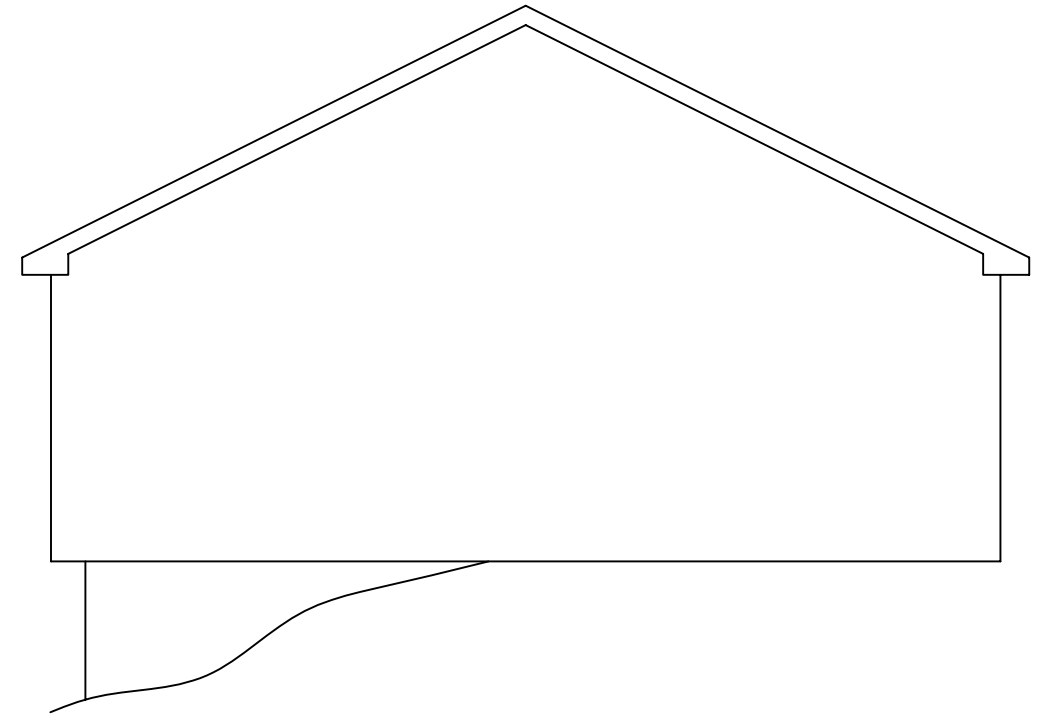
BEDROOM #3  
8'-9 1/2" X 9'-6"

BEDROOM #2  
8'-3" X 13'-0"

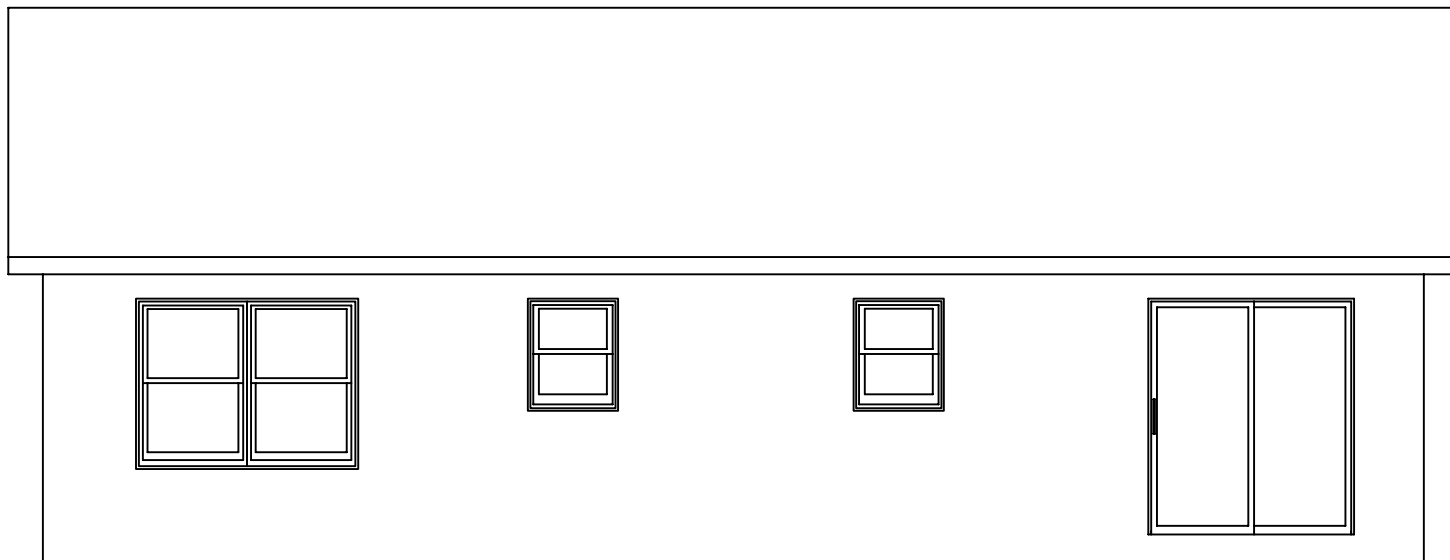
PRINCETON  
27'-6" X 40'-0"



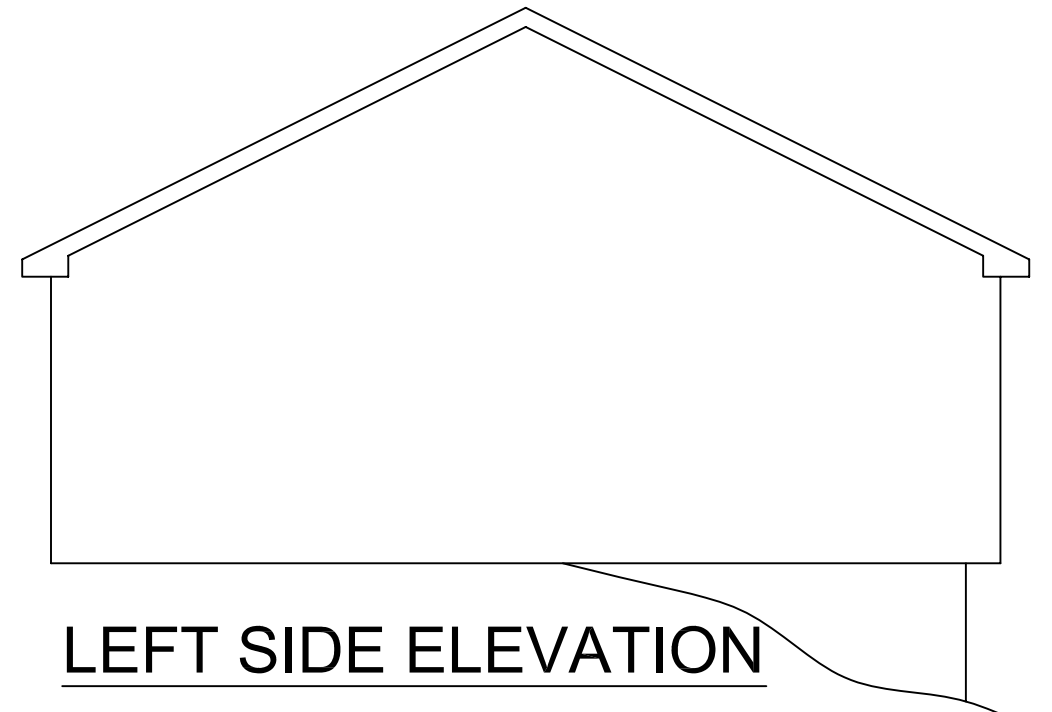
FRONT ELEVATION



RIGHT SIDE ELEVATION



REAR ELEVATION



LEFT SIDE ELEVATION